

# GEMSTONE REPORT

R-201813006



ID

**Natural Sapphire**

Color

**Intense Blue\***

Enhancement

**No Indication of Heat Treatment**

Origin

**Sri Lanka**

Photos Gallery

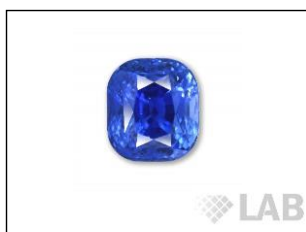


Image is approximate

Date .....**27.11.2018**

Weight .....**6.67ct**

Shape .....**Cushion**

Cut .....**ModBrilliant/ModStep**

Dimensions.....**10.08x8.74x8.21**

Cut



Comment:

Color Commonly Known as

**\*Cornflower**

Instruments used:

\*\*see next page for data report



FTIR



EDXRF



Magnification



Uv-vis



PL532



Raman



LIBS

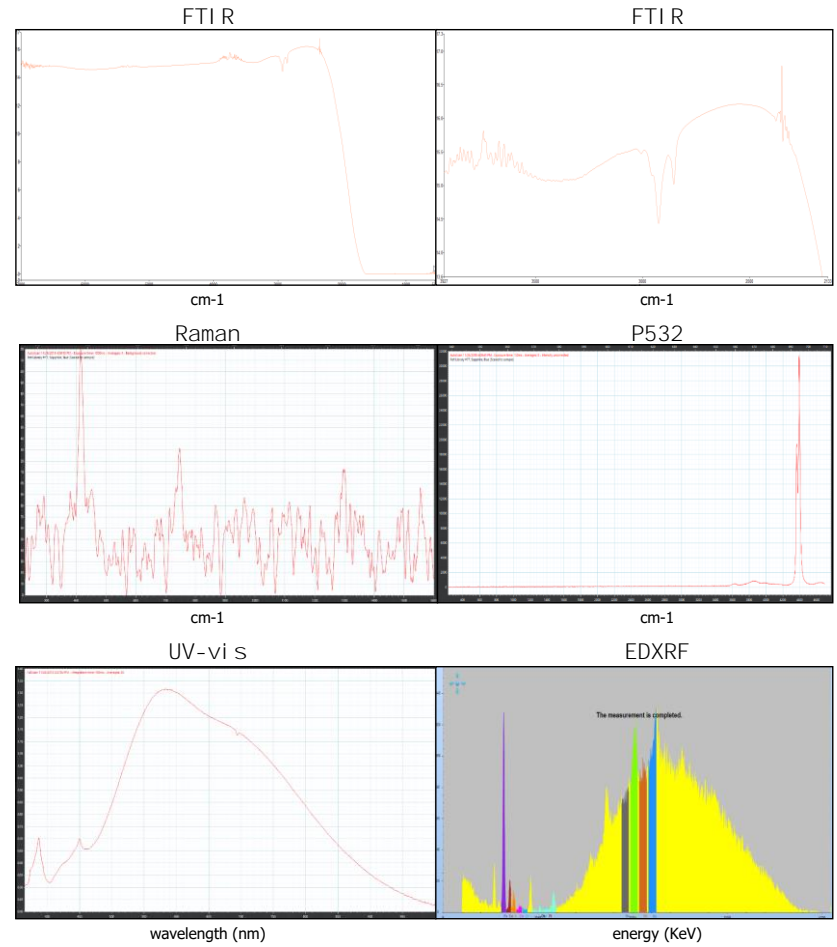
The Results Documented in this report refer only to the article described, and were obtained using the techniques and equipment used by LAB at the time of examination. This report is not a guarantee or valuation. For additional informations and disclaimers, visit [www.gemlabanalysis.com/clients](http://www.gemlabanalysis.com/clients)



R-201813006

# DATA GEMREPORT

Request HQ Pictures of your data at [info@gemlabanalysis.com](mailto:info@gemlabanalysis.com)



The data collected on your item is valid at the issuance date of this report