

Bellerophon | Gemlab

ED-XRF 6000 skyray analysis

Curve: Ruby (Cr+Al₂O₃)

Weight: 2.044 ct

Ref No: R-202137707

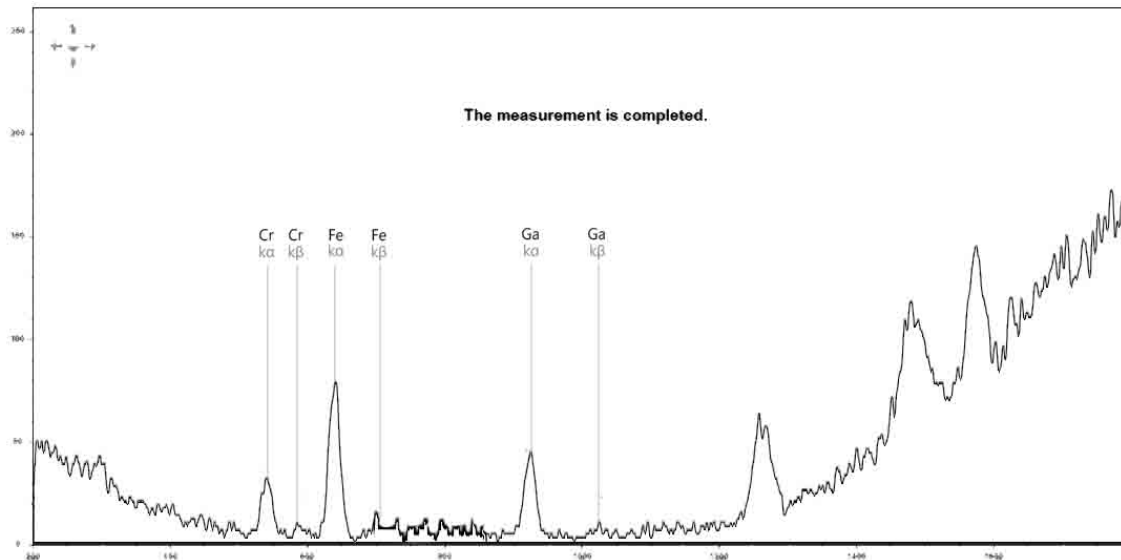
Date: April 1, 2021

TT CPS: UNK

Voltage: 16Kv --> 40Kv

T: "200

Vacuum: 0.0Kpa



G.E.M

Binary ratio Sys. 40Kv

Cr/Fe: META type Ia

Cr/Ga: META type Ia

Fe/Ga: META type Ia

Ternary ratio Sys 16/40 Kv

V/Cr/Fe: Pass III Mta

Cr/Fe/Ga: Pass II Mta

Ti/V/Cr: Pass III Mta

Correlation applied Curve:

FAILED

0.64 Madagascar

0.61 Ceylon

0.54 Mozambique

A.E.G.I.S

Qual. genesis:

V: bdl

Fe: +

Ni: -

Cu: -

Zn: bdl

Ga: +

Mo: -

Ag: -

Ta: -

Pb: -

Bi: -

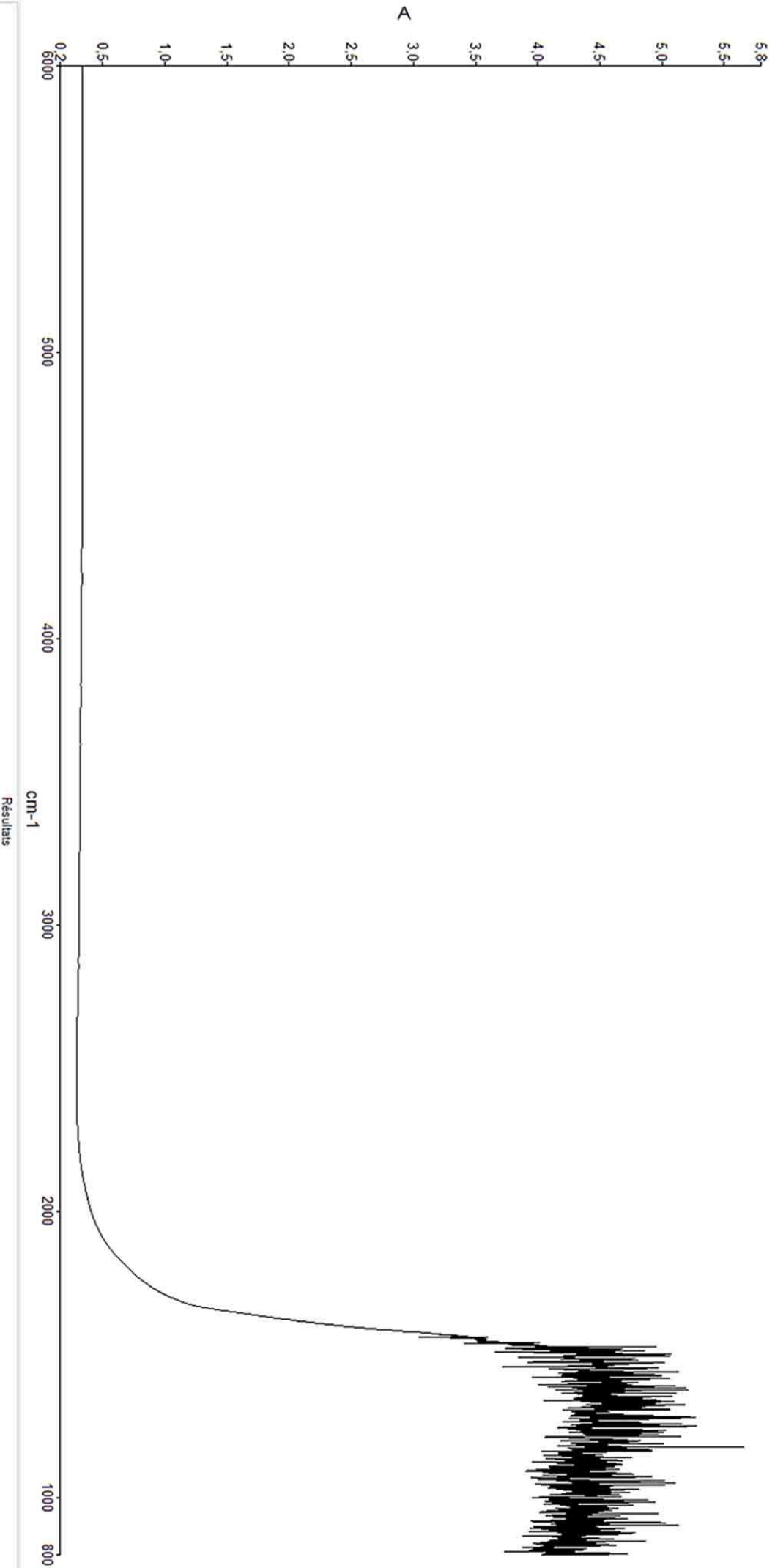
Quant. Enhancement(s):

not requested

Bellerophon | Gemlab

FTIR Perkin Elmer analysis
Weight: 2.044 ct
Ref No: R-202137707
Date: April 1, 2021

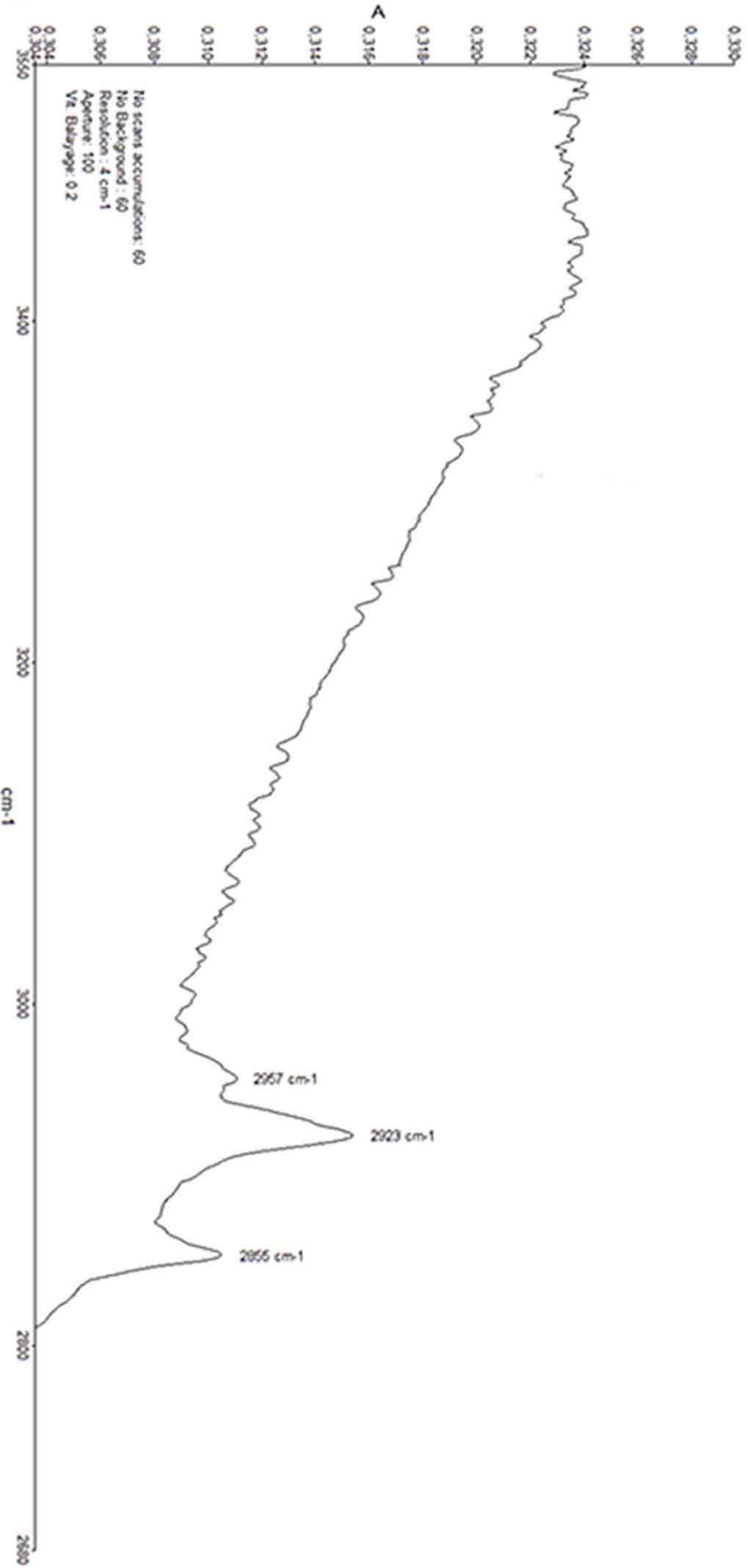
No scans accu: 60
No Background: 60
Resolution: 4cm-1
V/t. balayage: 0.2
Axis taken: 3



Bellerophon | Gemlab

FTIR Perkin Elmer analysis
Weight: 2.044 ct
Ref No: R-202137707
Date: April 1, 2021

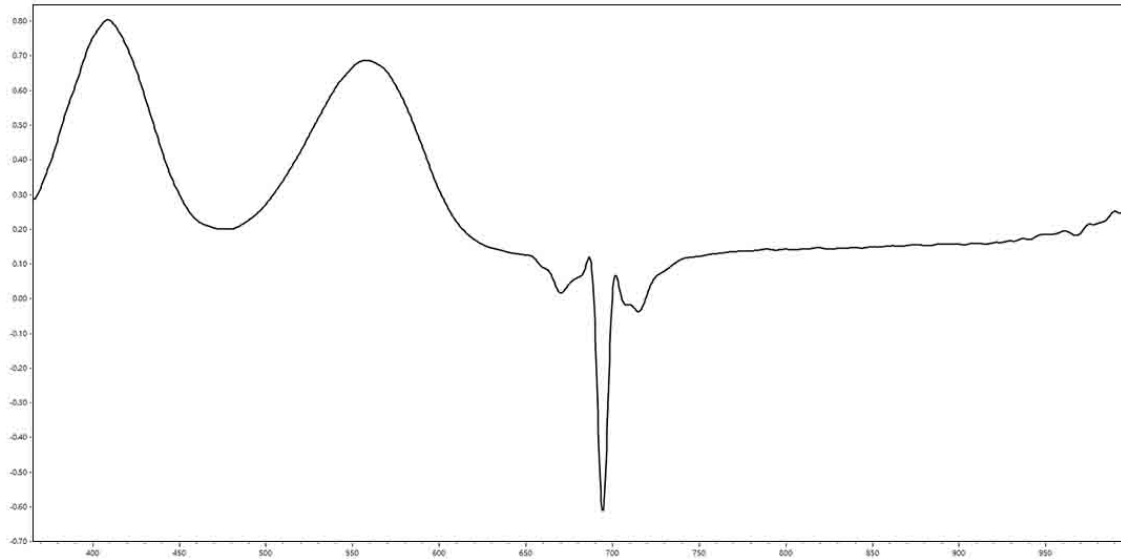
No scans accu: 60
No Background: 60
Resolution: 4cm⁻¹
V/t. balayage: 0.2
Axis taken: 3



Bellerophon | Gemlab

UV-vis OceanOptic analysis
Weight: 2.044 ct
Ref No: R-202137707
Date: April 1, 2021

Intr.Time: 30ms
Averages: 75
Boxcar: 1
Long Uv stab. ON



G.E.M

Correlation ID:

FAILED

0.87 Nat Cr Al₂O₃

0.84 Nat Pink Diamond

0.83 Melt Cr Al₂O₃

AutoScan 7/8/2021 4:21:03 PM - Exposure time: 100ms - Averages: 20 - Intensity uncorrected



