

# GEMSTONE REPORT

R-201813071



ID

**Natural Spinel**

Color

**Purplish Grey**

Enhancement

**No Indication of Heat Treatment**

Origin

**Burma (Myanmar)**

Photos Gallery

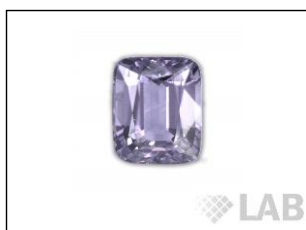


Image is approximate

Date .....**10.12.2018**

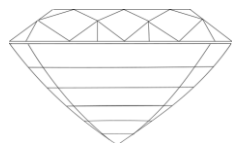
Weight .....**9.47ct**

Shape .....**Cushion**

Cut .....**Brilliant/Step**

Dimensions.....**12.83x10.26x7.28**

Cut



Instruments used:

\*\*see next page for data report



FTIR



EDXRF



Magnification



Uv-vis



PL532



Raman



LIBS

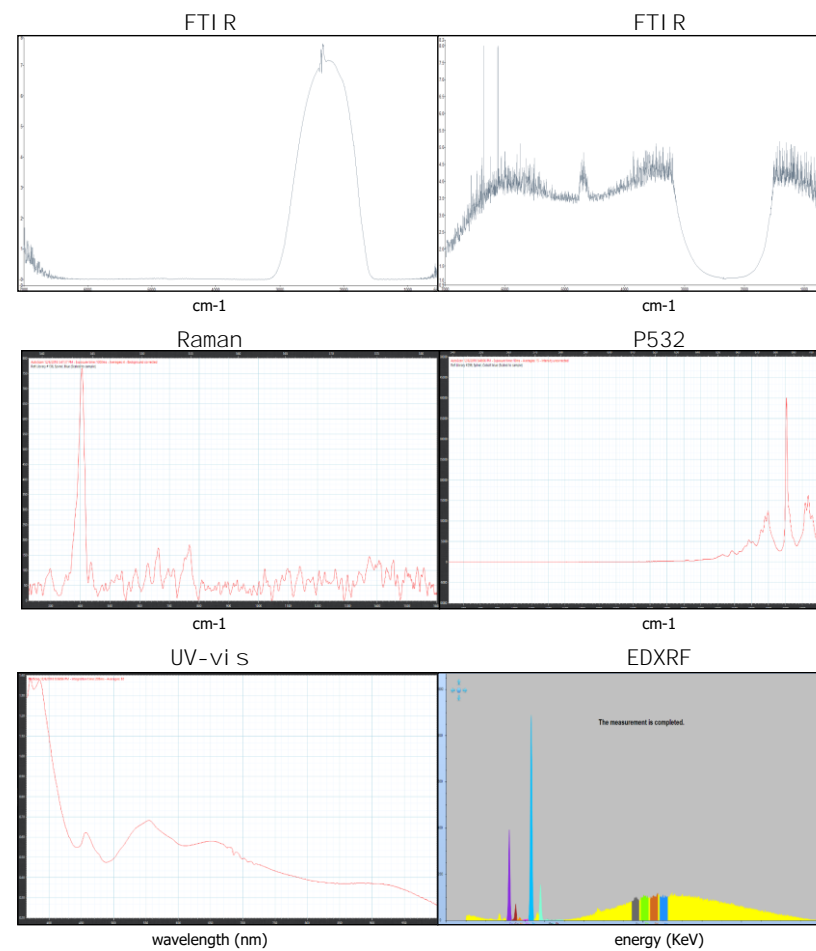
The Results Documented in this report refer only to the article described, and were obtained using the techniques and equipment used by LAB at the time of examination. This report is not a guarantee or valuation. For additional informations and disclaimers, visit [www.gemlabanalysis.com/clients](http://www.gemlabanalysis.com/clients)



R-201813071

## DATA GEMREPORT

Request HQ Pictures of your data at [info@gemlabanalysis.com](mailto:info@gemlabanalysis.com)



The data collected on your item is valid at the issuance date of this report