

# GEMSTONE REPORT

R-201812753



ID

**Natural Sapphire**

Photos Gallery

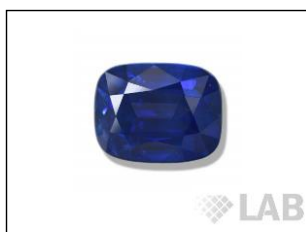


Image is approximate

Date .....**16.10.2018**

Weight .....**7.20ct**

Shape .....**Cushion**

Cut .....**Brilliant/Step**

Dimensions.....**11.12x9.00x7.27**

Color

**Vivid Blue\***

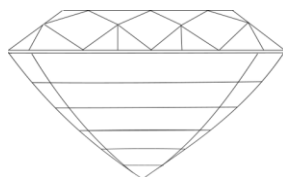
Enhancement

**Heat**

Origin

**Sri Lanka**

Cut



Comment;

Color Commonly Known as

**\*Royal Blue**

Instruments used:



IR



EDX



Magnification



Uv-vis



PL



Raman

\*\*see next page for data report

The Results Documented in this report refer only to the article described, and were obtained using the techniques and equipment used by LAB at the time of examination. This report is not a guarantee or valuation. For additional informations and disclaimers, visit [www.gemlabanalysis.com/clients](http://www.gemlabanalysis.com/clients)