

# GEMSTONE REPORT

R-201813017



ID

**Natural Sapphire**

Color

**Orangy Pink**

Enhancement

**No Indication of Heat Treatment**

Origin

**Madagascar**

Photos Gallery



Image is approximate

Date .....**27.11.2018**

Weight .....**0.93ct**

Shape .....**Oval**

Cut .....**Brilliant/ModStep**

Dimensions.....**7.10x5.06x2.90**

Cut



Comment:

Color Commonly Known as

**\*Padparascha**

Instruments used:

\*\*see next page for data report



FTIR



EDXRF



Magnification



Uv-vis



PL532



Raman



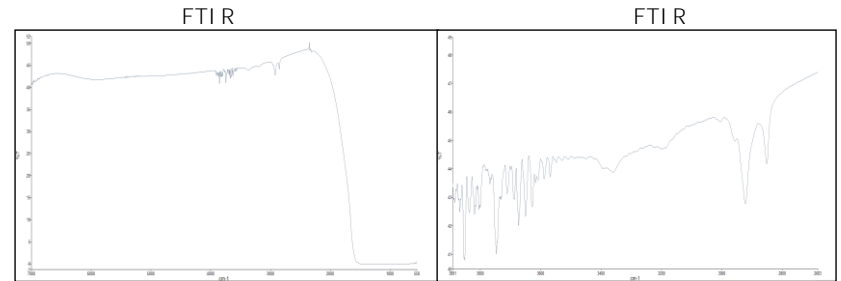
LIBS



R-201813017

# DATA GEMREPORT

Request HQ Pictures of your data at [info@gemlabanalysis.com](mailto:info@gemlabanalysis.com)

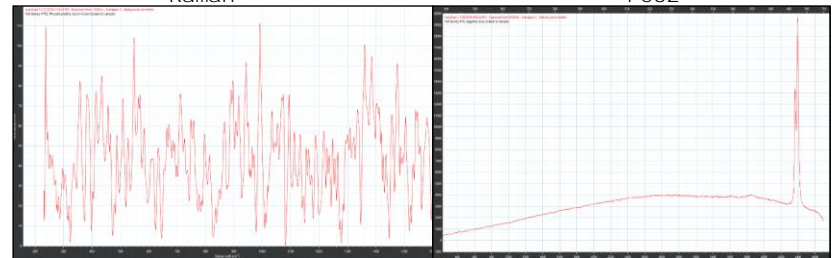


cm-1

cm-1

Raman

P532

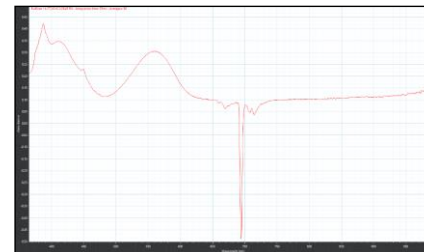


cm-1

cm-1

UV-vis

EDXRF



wavelength (nm)

energy (KeV)

The data collected on your item is valid at the issuance date of this report