

# GEMSTONE REPORT

R-201812579



ID

**Natural Sapphire**

Color

**Grayish Blue**

Enhancement

**No Indication of Heat Treatment**

Origin

**Madagascar**

Photos Gallery

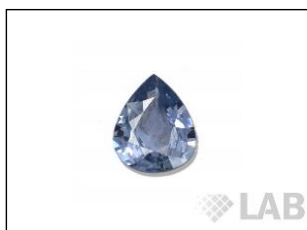


Image is approximate

Date .....**26.09.2018**

Weight .....**3.06ct**

Shape .....**Pear**

Cut .....**Brilliant/ModStep**

Dimensions.....**11.11x8.87x4.16**

Cut



Instruments used:

\*\*see next page for data report



IR



EDX



Magnification



Uv-vis



PL



Raman

The Results Documented in this report refer only to the article described, and were obtained using the techniques and equipment used by LAB at the time of examination. This report is not a guarantee or valuation. For additional informations and disclaimers, visit [www.gemlabanalysis.com/clients](http://www.gemlabanalysis.com/clients)